



FINN GOLD CUP 2015

Saturday 21st – Sunday 29TH November 2015
Takapuna Beach, North Shore, Auckland, New Zealand

The Organising Authority is the Takapuna Boating Club on behalf of the International Finn Association and the New Zealand Finn Class Association.

Notice of Race

1 RULES

- 1.1 The regatta will be governed by the rules as defined in *The Racing Rules of Sailing* and the International Finn Class Major Championship Rules. These may be changed, where permitted, by the Sailing Instructions.
- 1.2 The prescriptions and special regulations of Yachting New Zealand will not apply except the prescription relating to rule 68 – Damages, which states:
 1. The findings of fact, and decisions of protest committees, shall be relevant only for the purpose of the ISAF Racing Rules of Sailing.
 2. All claims for damages arising from breaches of any of these rules are matters for other jurisdictions.
 3. A boat that retires from a race, or accepts a penalty, does not, by that action alone, admit liability.
- 1.3 If there is a conflict between languages the English text will take precedence.
- 1.4 For the medal race, ISAF, Addendum Q, *Umpired Fleet Racing*, available on the website (www.sailing.org), will apply and changes the a number of racing rules. The version that is current when the regatta begins will appear in full in the sailing instructions.
- 1.5 All competitors will be required to wear an adequate personal floatation device at all times while afloat, except briefly while changing or adjusting clothing or personal equipment.
- 1.6 Boats will be required to display their national flag on their sail in accordance with the Class Rules.
- 1.7 Coach boat restrictions may be applied. These will be published in or with the Sailing Instructions.

2.0 ADVERTISING

Boats may be required to display bow numbers and advertising chosen and supplied by the organising authority. Such advertising, if any, shall be displayed in accordance with the Sailing Instructions.

3.0 ELIGIBILITY AND ENTRY

- 3.1 The regatta is open to all boats of the Finn Class and to competitors who comply with the ISAF Regulation 19, Appendix 3.



- 3.2 Eligible competitors shall be current members of an IFA recognised National Finn Association. They shall complete on-site registration at the venue prior to Monday 23rd November 2015 , unless the Organising Authority extends this date.
- 3.3 The entry quota of part D “Entry System for IFA Official Championships” of the Finn Class Rules will apply.
- 3.4 Entries shall be submitted online prior to 21st October 2015 unless extended by the Organising Authority. The entry form is available at www.finngoldcup.org/2015
- 3.5 An entry is not completed until an entry fee has been paid, the entry has been accepted by the Organising Authority and the International Finn Class Association and registration has been completed.
- 3.6 Valid measurement certificates shall be presented or their existence verified at on-site registration in accordance with RRS 78.2.

4.0 FEES

The entry fee is Euro 175 and shall be paid in full by 21st October 2015 in New Zealand Dollars as detailed on the entry form. Late entries may not be accepted and shall be subject to a late entry fee for a total of Euro 300.

5.0 FORMAT

- 5.1 Eleven(11) races are scheduled, comprising a fleet series and Medal Race or Final Race.
- 5.2 The top ten ranked highest in the fleet series will be assigned to compete in the Medal Race, the remaining boats will be assigned to sail in the Final Race.
- 5.3 This format may be changed with the approval of the IFA and will be specified in the Sailing Instructions, however the days allocated for racing will not be changed.
- 5.4 Two races per day are scheduled for each racing day, except for the final day when the Medal Race and Final Race are scheduled.
- 5.5 An extra race may be sailed on any day to enable the full number of scheduled races to be completed.
- 5.6 No more than **three** (3) races can be completed on each day.
- 5.7 This schedule may be changed to fit with any changes to NoR 4 and NoR 6 permitted by the IFA.

6.0 SCHEDULE

6.1

| Date | Event | Time of first Warning Signal | Location |
|-------------------------------|----------------------------------|------------------------------|-----------------------|
| Sat 21st November | Measurement/ Registration | 0800-2000hrs | Takapuna Boating Club |
| Sat 21 st November | Opening Ceremony | 1800hrs | Takapuna Boating Club |
| Sun 22nd November | Measurement/ Registration | 0800-2000hrs | Takapuna Boating Club |
| Mon 23rd November | Measurement/ Registration | 0800-2000hrs | Takapuna Boating Club |
| Mon 23rd November | Competitors Briefing | 1000hrs | Takapuna Boating Club |
| Mon 23rd November | Practice Race | 1300hrs | Takapuna Boating Club |
| Tues 24th November | Racing (2 races scheduled) | 1200hrs | Off East Coast Bays |
| Wed 25th November | Racing (2 races scheduled) | 1200hrs | Off East Coast Bays |
| Thu 26th November | Racing (2 races Scheduled) | 1200hrs | Off East Coast Bays |
| Fri 27th November | Racing (2 races scheduled) | 1200hrs | Off East Coast Bays |
| Sat 28th November | Racing (2 races scheduled) | 1200hrs | Off East Coast Bays |
| Sun 29th November | Medal Race and Final Race | 1100hrs | Off Takapuna Beach |
| Sun 29th November | Closing Ceremony/ Prize Giving | After Racing | Takapuna Boating Club |



- 6.2 **No warning signal will be made after 1530 hours on Sunday 29th November 2015.**
- 6.3 All participants are requested by the International Finn Class and the Organising Authority to attend the Opening and Closing Ceremonies.

7.0 MEASUREMENT

- 7.1 All boats shall have their hulls, spars and sails measured as well as equipment checks according to the Finn Class Rules (including item 10 of Part C “Major Championship Rules”) unless otherwise decided by the IFA Chief Measurer.
- 7.2 All measured equipment will be identified for the Championship.
- 7.3 Only identified equipment may be used during the regatta.
- 7.4 All competitors shall hold a valid measurement and class registration certificate.
- 7.5 In accordance with RRS 78, competitors are responsible for maintaining their boat in accordance with the Class Rules (for the purpose of RRS 78, competitors are considered to be the owners). Random measurement inspections will be carried out throughout the event.

8.0 SAILING INSTRUCTIONS

- 8.1 The Sailing Instructions will be on the website www.finngoldcup.org/2015 after 12th November 2015 and will also be available at registration.

9.0 THE VENUE

- 9.1 The regatta venue is:
The Takapuna Boating Club,
The Strand, Takapuna, North Shore, Auckland 0740, New Zealand
Postal address: PO Box 33062, Takapuna Beach, Auckland 0740, New Zealand.
Email: info@takapunaboating.org.nz
Website: www.takapunaboating.org.nz
Phone: +64 9 445 9032
- 9.2 Attachment 1 shows the location of the regatta venue.

10. COURSES

- 10.1 The courses will be as per the current IFA Championship Rules.

11.0 SCORING

- 11.1 Four (4) races shall be completed to constitute a valid Championship.
- 11.2 Five (5) races shall be completed to constitute the fleet series before a medal race or final race are scheduled.
- 11.3 The Low Point Scoring system of RRS Appendix A shall apply.
- 11.4 The Low Point Scoring system will be amended in the SI to account for the medal race.
- 11.5 Scoring may be changed to fit with changes to NoR4 and 6 permitted by the IFA.

12.0 PENALTY SYSTEM

- 12.1 *Racing Rule Appendix P will apply.*
- 12.2 An International Jury will be appointed in accordance with RRS Appendix N and perform the duties listed in RRS N2.
- 12.3 Decisions of the International Jury will be final as provided in racing Rule 70.5.



13.0 SUPPORT BOATS

- 13.1 Coaches, team leaders and representatives from participating nations shall confirm their registration at the Regatta Office before the first racing day.
- 13.2 Support boats shall fly a flag with their three national letters clearly displayed or shall be permanently marked with a sticker of their three national letters on each side of the boat.
- 13.3 Sufficient Personal Flotation Devices for each crew member must be worn by all times in accordance with New Zealand Maritime Law.
- 13.4 Coaches, team leaders and other support personnel shall comply with clause 14 at all times.

14.0 PROHIBITED ANCHORING AREA: SUPPORT BOATS

- 14.1 Boats associated with the regatta and registered support boats shall comply with the New Zealand Government Regulation "Submarine Cables and Pipelines Protection Act 1996". The regulation prohibits anchoring in the area shaded in the "No Anchoring Area" in Attachment 2 and defined in charts NZ 532 and NZ 5322.
- 14.2 All support boats shall be registered with the Organising Authority and will be required to comply with all local legislation, the sailing Instructions and any event support boat regulations. The Organising Authority may refuse registration and accept later registrations at their sole discretion.

15.0 PRIZES

- 15.1 The class perpetual trophies will be awarded, including the winner of the Finn Gold Cup.
- 15.2 The Organising Authority will provide prizes for the top ten (10) boats and the top five(5) juniors.

16.0 LAUNCHING

- 16.1 All competing boats must launch and retrieve from Takapuna Beach.

17.0 INSURANCE

- 17.1 Each participating boat shall be insured with valid third-party liability insurance with a minimum cover of 2,000,000 Euro per event or equivalent thereof in any currency for any one incident. By entering the event each competitor declares that they hold such insurance.
- 17.2 A certificate of such shall be shown at registration.

18.0 DOPING CONTROL

- 18.1 Competitors are reminded of the ISAF rules and regulations concerning the use of banned methods and substances.
- 18.2 Doping control may take place during the event.

19.0 RADIO COMMUNICATION

- 19.1 Except in a emergency, a boat shall neither make radio transmissions while racing nor receive radio communications not available to all boats. This restriction applies to mobile telephones.



20.0 MEDIA RIGHTS, CAMERAS AND ELECTRONIC EQUIPMENT

21.1 Competitors and/ or their Guardians automatically grant the Organising Authority, The International Finn Association and any party to which they may be delegated this right, without payment the right in perpetuity to make, use or show, (including via the internet), any motion pictures, still pictures, live, taped or filmed television, or any other form of media, of or relating to the event.

22.0 DISCLAIMER

22.1 Competitors participate in the regatta entirely at their own risk. See RRS 4, *Decision to Race*. The Organising Authority will require each competitor to sign a waiver for loss, damage or injury to persons or properties occurring in conjunction with the regatta or on the yacht club premises. The Organising Authority and the International Finn Association, and their respective members, employees, officers and / or agents shall not be responsible for any loss, damage or injury that may occur to person or property whether ashore or at sea as a consequence of the participation of any boat.

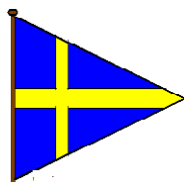
23.0 ACCOMMODATION

For information on local accommodation please contact: Refer to Clause 24

24.0 FURTHER INFORMATION

For further information please contact:

Evelyn Johnson, Event Director: email: evelyn1@clear.net.nz



TAKAPUNA BOATING CLUB INC.

P O Box 33 062
Takapuna Beach, 0740,
Auckland, New Zealand

Web: www.takapunaboating.org.nz
E-mail: info@takapunaboating.org.nz
Ph. 489 6941 Fax 486 0747



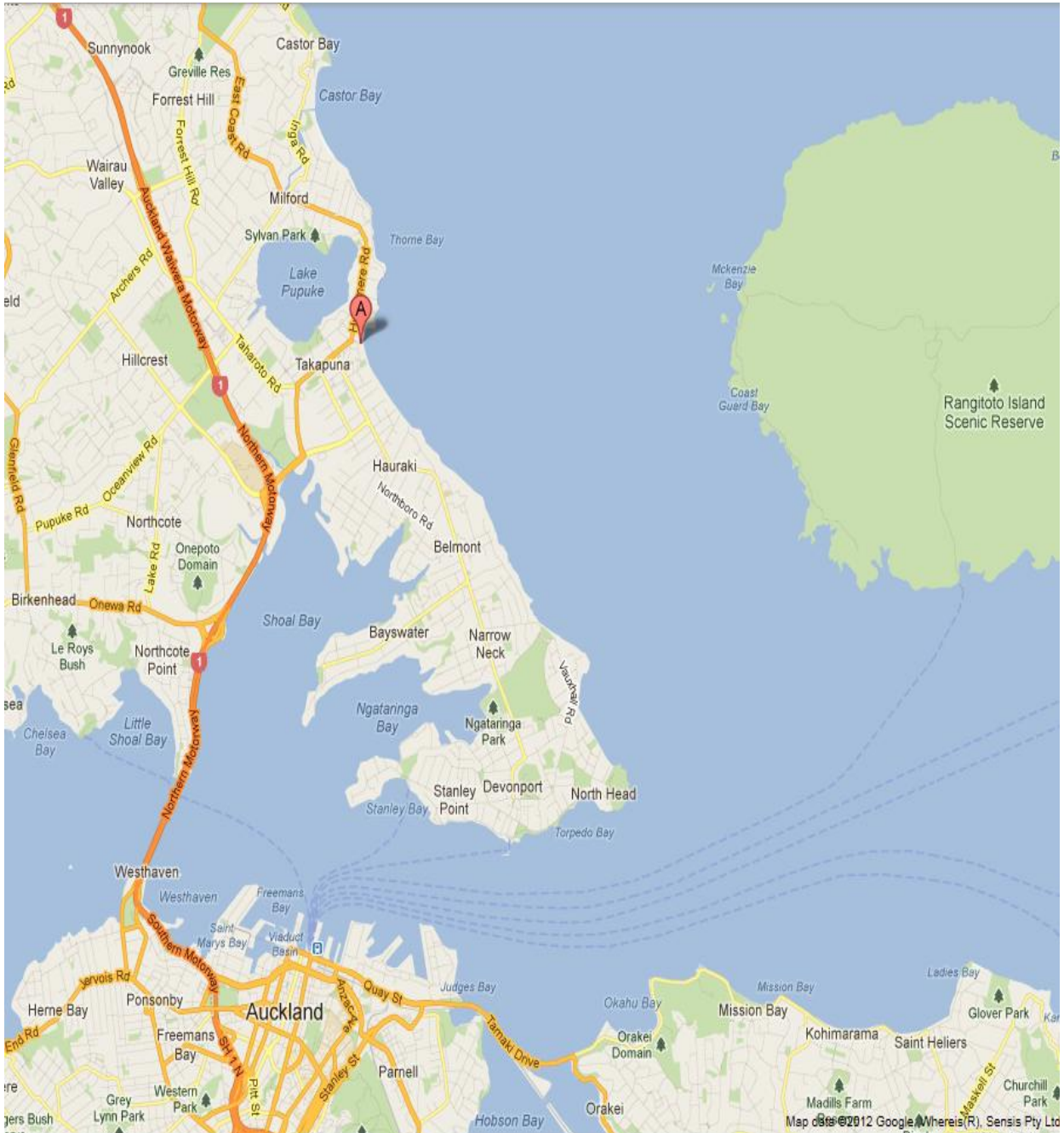


FINN GOLD CUP 2015
Takapuna Boating Club New Zealand



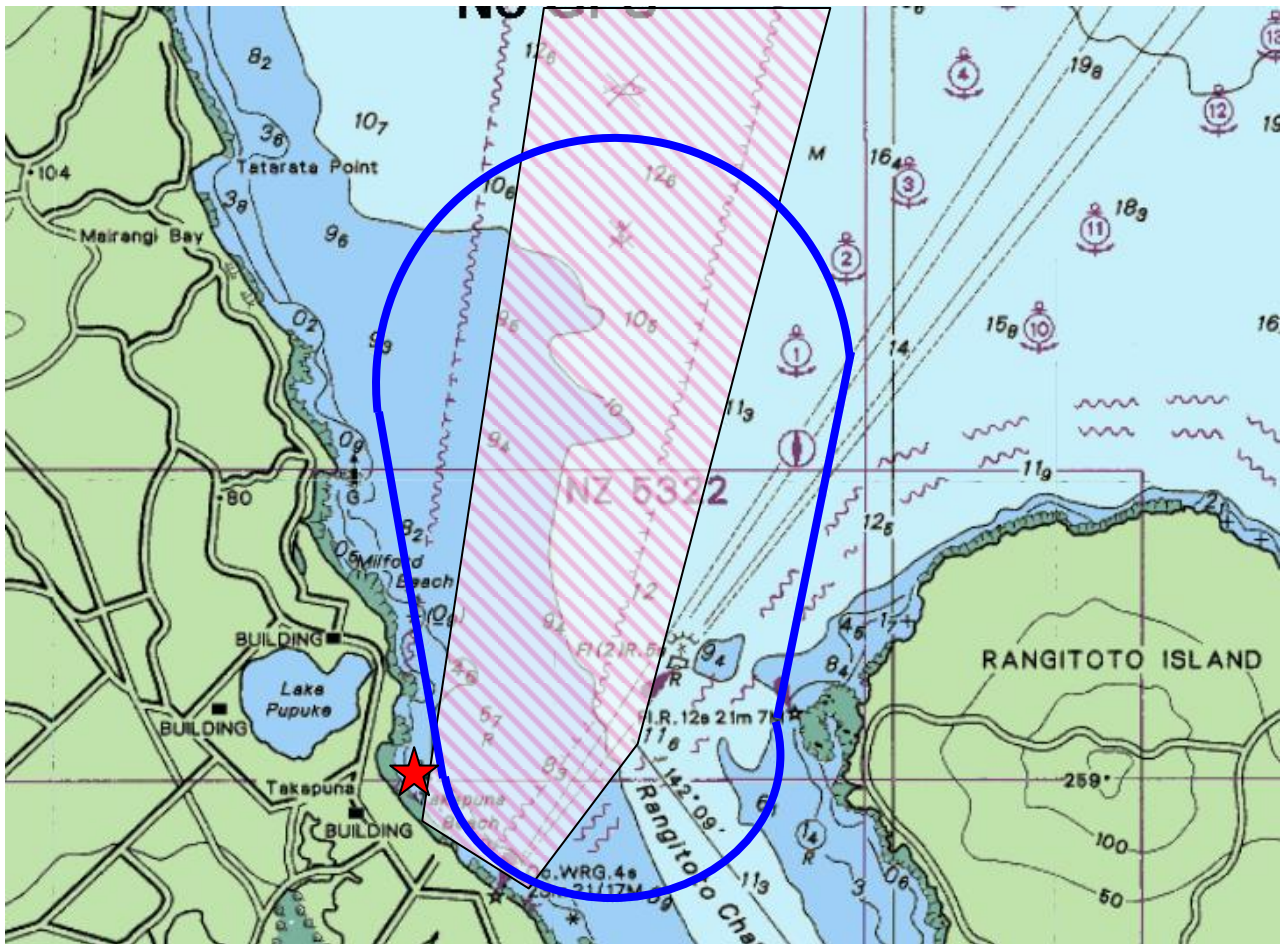
ATTACHMENT 1:




LOCATION OF THE TAKAPUNA BOATING CLUB



ATTACHMENT 2

APPROXIMATE LOCATION OF THE RACING AREA



-  Takapuna Boating Club location
-  Approximate course area
-  Prohibited anchoring area