

2015 FINN CLASS AUCKLAND CHAMPS **PRE-WORLDS REGATTA**

Monday 16th – Thursday 19th November 2015
Takapuna Beach, Auckland, New Zealand

Takapuna Boating Club
Takapuna, Auckland, New Zealand

The Organising Authority is the Takapuna Boating Club, PO Box 33062, Takapuna Beach,
Auckland 0740, New Zealand.

In Association with the New Zealand Finn Association.

Notice of Race

1.0 RULES

- 1.1 The regatta will be governed by the rules as defined in *The Racing Rules of Sailing*.
- 1.2 The Yachting New Zealand Safety Regulations Part 1 shall apply. See:
<http://www.yachtingnz.org.nz/Upload/UserDocument/Safety%20Regs%20Part%201%202009%20Final.doc>
- 1.3 The rules of the International Finn Class shall apply
- 1.4 For protests where only a Rule of Part 2, *When Boats Meet*, or Rule 31, *Touching a Mark*, is alleged to have been broken an arbitration hearing will be offered prior to any formal hearing.
- 1.5 If there is a conflict between languages the English text will take precedence.

2.0 ADVERTISING

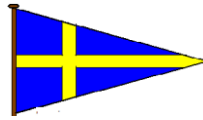
Boats may be required to display advertising chosen and supplied by the organising authority.

3.0 ELIGIBILITY AND ENTRY

- 3.1 The regatta is open to all boats of the Finn Class that comply with the class rules.
- 3.2 Entries shall be submitted online prior to 21st October 2015 unless extended by the Organising Authority. The entry form is available at www.finngoldcup.org/2015 or 2015.finngoldcup.org
- 3.3 Late entries may be accepted at the Organising Authority's discretion up to 1000hrs on Tuesday 17th, November, 2015.
- 3.4 To be eligible to compete in this event, each entrant shall be a financial member of a club recognised by the entrant's national authority and an International Finn Association affiliated National association. Proof of membership must be provided at Registration.

4.0 CLASSIFICATION

There are no classification requirements in accordance with RRS 79.



5.0 FEES

- 5.1 The entry fee will be NZD \$160 per boat and shall be paid in full by 21st October 2015 as detailed on the entry form.
- 5.2 Entries received after Friday 6th November 2015 will be subject to an additional fee of NZD \$100.
- 5.3 Payment to be made by 21 October 2015.

Organising authority Bank details:

Bank: ASB Bank Ltd

Branch: Central Auckland Commercial Banking

Account number: 12 - 3109 - 0044465 - 03

Swift/IBAN number: ASBBNZ2A

Reference the payment with your name and your country & sail number

6.0 FORMAT

The regatta will consist of a single series.

7.0 SCHEDULE

7.1 Registration:

Monday 16th November 2015, 1500hrs – 1900hrs at the Takapuna Boating Club.

Tuesday 17th November 2015, 0800hrs – 1000hrs at the Takapuna Boating Club.

7.2 Briefing:

A briefing will be held at 0930hrs at the Takapuna Boating Club.

7.3 Sailing Schedule

DATE	Time of First Warning Signal	No. of Races
Tuesday 17 th November	1100hrs	3 back to back
Wednesday 18 th November	1100hrs	3 back to back
Thursday 19 th November	1100hrs	3 back to back

7.4 On Thursday 19th November, 2015, no warning signal will be made after 1530hrs.

8.0 MEASUREMENT

8.1 Each boat shall produce a valid measurement certificate at registration.

8.2 All sails shall have the full unique official number and sailors from other than New Zealand shall have national letters on their sails in accordance with the class rules and RRS.

9.0 SAILING INSTRUCTIONS

The sailing instructions will be available at registration, at the Takapuna Boating Club.

10.0 VENUE

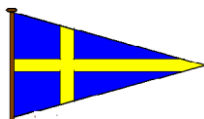
Attachment 1 shows the location of the regatta venue and the approximate location of the racing area.

11.0 COURSES

The course to be sailed will be either Windward/Leeward or Triangular courses.

12.0 PENALTY SYSTEM

Appendix P may apply.



13.0 SCORING

13.1 Three (3) races are required to complete a series.

- 13.2 (a) When fewer than Four (4) races have been completed, a boat's series score will be the total of his race score.
- (b) When Four (4) or more races have been completed, a boat's series score will be the total of his race score excluding her worst score.

14.0 SUPPORT BOATS

14.1 All support boats must register with the Organising Authority at registration and nominate the boats(s) they support.

14.2 Team Leaders, coaches and other support personnel shall comply with NoR clause 15.

15 PROHIBITED ANCHORING AREA

15.1 Boats associated with the regatta and registered support boats shall comply with the New Zealand Government regulation "Submarine Cables and Pipelines Protection Act 1996". This registration prohibits anchoring in the area shaded in the "No Anchoring Area" in Attachment 2 and defined on charts NZ 532 and NZ 5322.

15.2 Any support boat breaking NoR Clause 15.1 will be subject to a hearing which may result in a report to their national authority and ISAF. As a consequence, a competitor associated with the skipper of the support craft may be disqualified from the race closest to the time of the infringement.

15.3 Attachment 2 shows the Prohibited Anchoring Area shaded in Pink.

16.0 STORAGE AND LAUNCHING

16.1 Boats may be kept on the reserve adjacent to the Takapuna Boat Club.

16.2 Unless otherwise directed by the Organising Authority, all competing boats and equipment shall be launched and retrieved from Takapuna Beach.

17.0 RADIO COMMUNICATION

Except in an emergency, a boat shall neither make radio transmissions while racing nor receive radio communications not available to all boats. This restriction applies to mobile telephones.

18.0 PRIZES

Prizes will be awarded by NZ Finn Association..

19.0 RIGHTS TO USE NAME AND LIKENESS.

In signing the Entry Form and participating in the regatta a competitor automatically grants the Organising Authority and the sponsors of the regatta the right in perpetuity to make, use and show, from time to time at their discretion, any motion pictures, still pictures and live, taped or film television and other reproductions of him during the period of the competition for the said regatta in which the competitor participates and in all material related to the said regatta without compensation.

20.0 DISCLAIMER

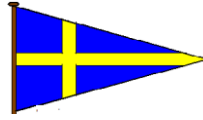
Competitors participate in the regatta entirely at their own risk. See Rule 4, *Decision to Race*. The organising authority will not accept any liability for material damage or personal injury or death sustained in conjunction with, or prior to, during or after the regatta.

21.0 FURTHER INFORMATION

For further information please contact:

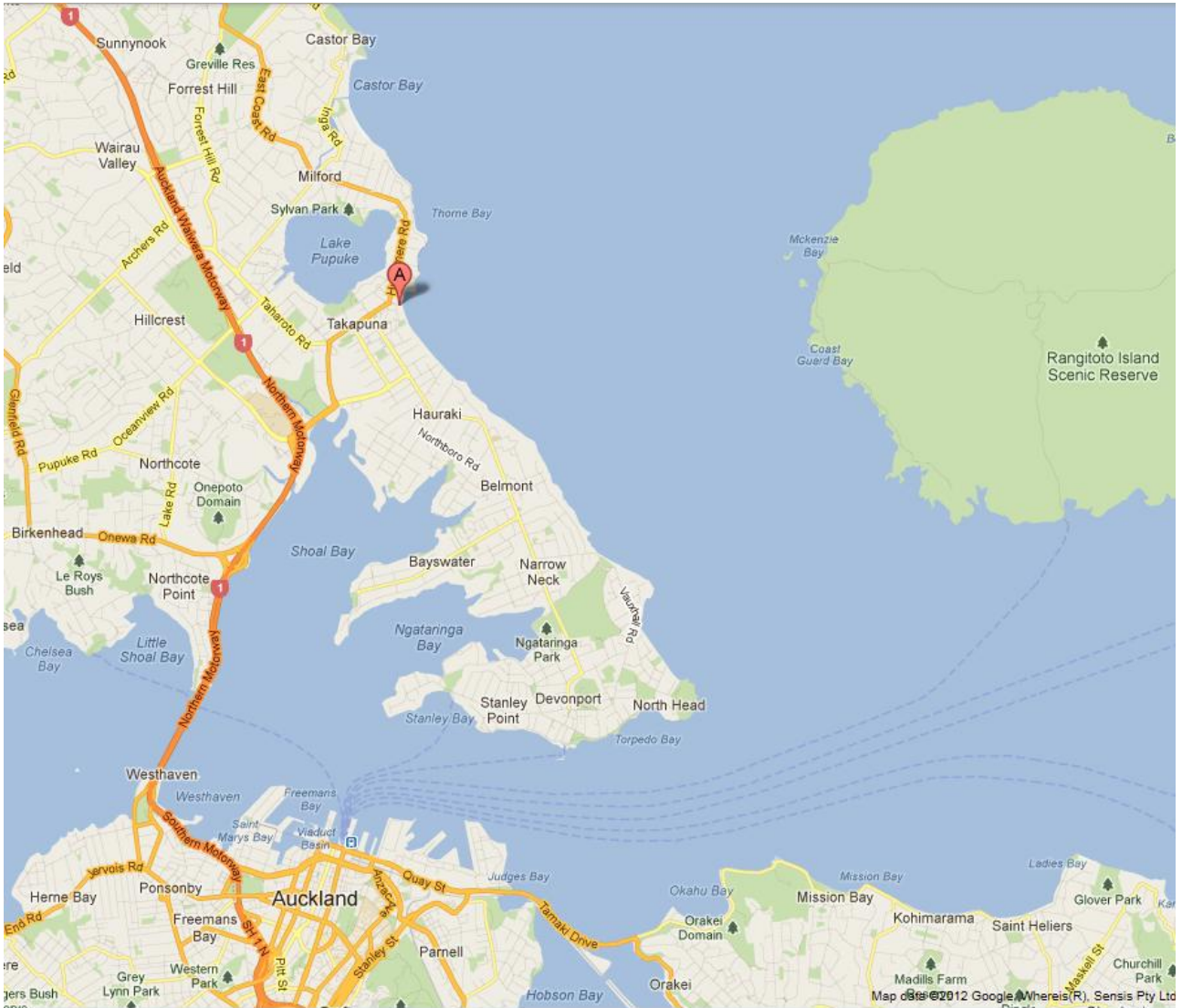
Evelyn Johnson at evelyn1@clear.net.nz

Or mobile +6421847417



APPENDIX 1

LOCATION OF TAKAPUNA BOATING CLUB

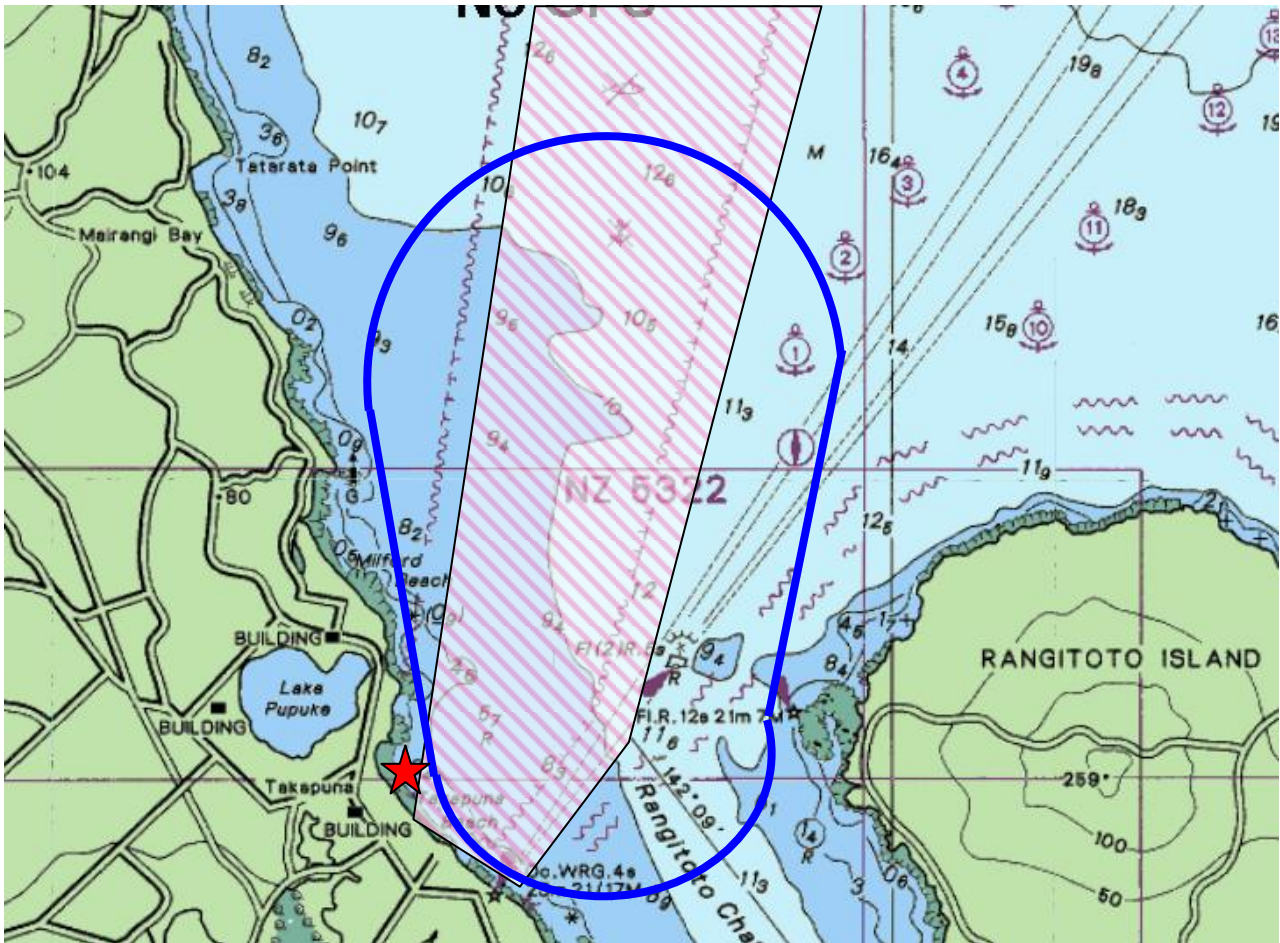



A Takapuna Boating Club location


39 The Strand
Takapuna
Auckland, NZ


APPENDIX 2

APPROXIMATE LOCATION OF THE RACING AREA



 Takapuna Boating Club location

 Approximate course area

 Prohibited anchoring area