

Barfoot and Thompson 2015/16 Auckland Finn Championships

Monday 16th – Thursday 19th November 2015
Takapuna Beach, North Shore, Auckland, New Zealand

Takapuna Boating Club
Takapuna, Auckland, New Zealand

The Organising Authority is the Takapuna Boating Club, PO Box 33062, Takapuna Beach,
Auckland 0740, New Zealand
In association with the New Zealand Finn Association.

Sailing Instructions

1. RULES

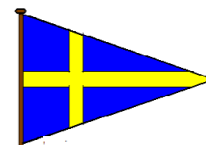
- 1.1 The regatta will be governed by the rules as defined in *The Racing Rules of Sailing*.
- 1.2 The Yachting New Zealand Safety Regulations Part 1, Category 4 shall apply. See:
<http://www.yachtingnz.org.nz/Upload/UserDocument/Safety%20Regs%20Part%20I%202009%20Final.doc>
- 1.3 The Rules of the International Finn Class shall apply.
- 1.4 If there is a conflict between languages, the English text will take precedence.
- 1.5 Boats shall at all times observe the Auckland Council Navigation Safety bylaws in particular Part 8, 55. A Moving prohibited zone.
 - (1) "A moving prohibited zone extending to 100m astern and 100m to each side of a large vessel, and continued at such width to 500m ahead, following the line of the buoyed channel when changing course, is reserved around a large vessel, when that large vessel is underway within the pilotage areas of Auckland (excluding Tamaki River) and Manukau.
 - (2) "When navigating within a marked channel, the moving prohibited zone to the side of the vessel is reduced to the width of the marked channel and the zone ahead of the vessel shall follow the line of the marked channel."
 - (3) The owner or person in charge of a vessel must not navigate the vessel within the moving prohibited Zone of a large vessel, within the pilotage areas of Auckland (excluding Tamaki River) and Manukau.
 - (4) For the purpose of this clause, a tug and barge is considered a composite unit.

2. CODE OF CONDUCT

- 2.1 Competitors shall comply with any reasonable request from a regatta official.

3. NOTICES TO COMPETITORS

- 3.1 Notices to competitors will be posted on the official notice board located inside the Takapuna Boating Club.



4. CHANGES TO THE SAILING INSTRUCTIONS.

4.1 Any change to the sailing instructions will be posted before 0900hrs on the day that it will take effect, except that any change to the schedule of races will be posted by 1800hrs, or at the end of protest time, whichever is earlier on the day before it will take effect.

5. SIGNALS MADE ASHORE

5.1 Signals made ashore will be displayed at the flag pole located on the front deck of the Takapuna Boating Club.

5.2 When flag D with one sound signal means “The warning signal will not be made less than 60 minutes after flag D is displayed. Boats are requested not to leave the beach until this signal is made.

6. SCHEDULE OF RACES

6.1

Day	Date	No. of Races	Time of first Warning Signal
Tuesday	17 th November	3 back to back	1100hrs
Wednesday	18 th November	3 back to back	1100hrs
Thursday	19 th November	3 back to back	1100hrs

6.2 To alert boats that a race or schedule of races will begin soon, the orange starting flag will be displayed with one sound signal at least five (5) minutes before a warning signal is made.

6.3 On Thursday 19th November 2015 no warning signal will be made after 1530hrs.

7. FLAGS

7.1 The class flag will be the Finn class insignia on a white background.

8. RACING AREA

8.1 Attachment 2 shows the location of the racing areas.

9. THE COURSES:

9.1 The diagram in Attachment 1 show the courses, including the approximate angles between legs, the order in which marks are to be passed, and the side on which each mark is to be left.

9.2 No later than the warning signal, the race committee boat will display the course to be sailed, the approximate compass bearing and distance to the first mark. The course will be display on a board under the boom of the signal boat.

9.3 Courses will not be shortened. This changes rule 32, Shorting or Abandoning After the Start.

10. MARKS

10.1 Marks are described in Attachment 1.

10.2 New marks are described in Attachment 1.

10.3 The starting and finishing marks are described in Attachment 1.

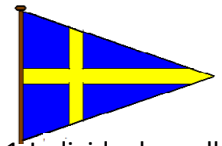
10.4 The race committee boat signalling a change of a leg of the course is a mark as provided in instruction 12.2.

11. THE START

11.1 The starting line will be between a staff displaying an orange flag on the starting mark at the starboard end and the port-end starting mark.

11.2 A boat starting later than four(4) minutes after her starting signal will be scored Did Not Start without a hearing. This changes rules A4, *Low Point System*, and A5, *Scores Determined By The Race Committee*.

11.3 If flag U has been displayed as the Preparatory signal, no part of a boat’s hull, crew or equipment shall be in the triangle formed by the ends of the starting line and the first mark during the last minute before her starting signal. If a boat breaks this rule and is identified, she shall be disqualified without a hearing but not if the race is restarted or resailed or postponed or abandoned before the starting signal. This



changes rule 26 Starting Races. When flag U is used as a preparatory signal rule 29.1 Individual recall does not apply. The scoring abbreviation for a flag U penalty is UFD. This changes rule A1 Scoring Abbreviations.

12. CHANGE OF THE NEXT LEG OF THE COURSE

- 12.1 To change the next leg of the course, the race committee will lay a new mark (or move the finishing line) and remove the original mark as soon as practicable. When in a subsequent change a new mark is replaced, it will be replaced by the original mark.
- 12.2 Except at a gate, boats shall pass between the race committee boat signalling the change of the next leg and the nearby mark, leaving the mark to port and the committee boat to starboard. This changes rule 28, *Sailing The Course*.

13. THE FINISH

- 13.1 The finishing line will be between a staff displaying an orange flag on the finishing mark at the starboard end and the course side of the finishing mark at the other end.

14. PENALTY SYSTEM

- 14.1 Appendix P will apply.

15. TIME LIMITS AND TARGET TIMES

15.1

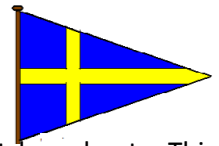
Time Limit	Mark 1 time limit	Target time
70 minutes	15 minutes	40 minutes

If no boat has passed Mark 1 within the Mark 1 time limit the race will be abandoned. Failure to meet the target time will not be grounds for redress. This changes rule 62.1(a), *Redress*.

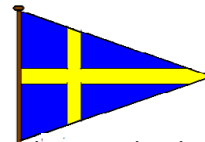
- 15.2 Boats failing to finish within 10 minutes after the first boat sails the course and finishes will be scored Did Not Finish without a hearing. This changes rules 35, Time Limit and Scores, A4 ,Low Point And Bonus Point Systems, and A5, Scores Determined By The Race Committee.

16. PROTESTS AND REQUEST FOR REDRESS

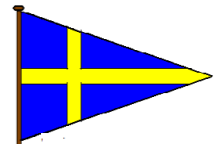
- 16.1 Rule 44.1 is changed to permit a boat that has broken a rule of Part 2 or rule 31 to take a penalty after racing but prior to any protest hearing. Her penalty shall be a scoring penalty as calculated in rule 44.3(c) equal to 40% of the number of entries in her fleet or 50% of the difference between her finishing position and the number of entries in her fleet, whichever is less.
- 16.2 For protests where only a rule of Part 2, *When Boats Meet*, or Rule 31, *Touching A mark*, is alleged to have been broken, an arbitration hearing will be offered prior to any formal hearing. Yachting New Zealand 4.5.5 will apply. (This changes Rule 44.1, *Taking A Penalty*). The scoring abbreviation for a penalty accepted at an arbitration hearing is ARB.
- 16.3 Protest forms are available at the race office, located in the Takapuna Boating Club. Protests and requests for redress or reopening shall be delivered there within the appropriate time limit.
- 16.4 The protest time limit is 60 minutes after the last boat has finished the last race of the day or the race committee signals no more racing today, whichever is the later.
- 16.5 Notices will be posted no later than 15 minutes after the protest time limit to inform competitors of hearings in which they are parties or named as witnesses. Hearings will be held in the protest room, located on the top floor of the Takapuna Boating Club, beginning at the time posted.
- 16.6 Notices of protests by the race committee or protest committee will be posted to inform boats under rule 61.1(b), *Informing the Protestee*.
- 16.7 A list of boats that, under instruction 14.3, have been penalized for breaking rule 42, *Propulsion*, will be posted.



- 16.8 Breaches of instruction 18, 21, 23, 24, 25 and 26 will not be grounds for a protest by a boat. This changes rule 60.1(a), *Right to Protest; Right to Request Redress or Rule 69 Action*. Penalties for these breaches may be less than disqualification if the protest committee so decides.
- 16.9 On the last scheduled day of racing a request for reopening a hearing shall be delivered
- (a) Within the protest time limit if the requesting party was informed of the decision on the previous day;
 - (b) No later than 30 minutes after the requesting party was informed of the decision on that day.
- This changes rule 66, *Reopening A Hearing*.
- 16.10 On the last scheduled day of racing a request for redress based on a protest committee decision shall be delivered no later than 30 minutes after the decision was posted. This changes rule 62.2.
- 17. SCORING:**
- 17.1 Three (3) races are required to be completed to constitute a series.
- 17.2
- (a) When fewer than Four (4) races have been completed, a boat's series score will be the total of all her races.
 - (b) When from Four (4) or more races have been completed, a boat's series score will be the total of her race scores excluding her worst score.
- 18. SAFETY REGULATIONS**
- 18.1 Competitors or their representatives shall check out each time they leave the shore to enter the course area, and shall check in each time they come ashore from the course.
- 18.2 The check in and out will be located in the Takapuna Boating Club.
- 18.3 A boat that retires from a race or returns to the launching area before she has finished the last race of the day shall notify the race committee as soon as possible.
- 19. REPLACEMENT OF CREW OR EQUIPMENT**
- 19.1 Substitution of competitors will not be allowed without prior written approval of the race committee.
- 19.2 Substitution of damaged or lost equipment will not be allowed unless authorised by the race committee. Requests for substitution shall be made to the race committee at the first reasonable opportunity.
- 19.3 Change of sail numbers will not be allowed without written approval of the race committee.
- 20. EQUIPMENT AND MEASUREMENT CHECKS.**
- 20.1 A boat or equipment may be inspected at any time for compliance with the class rules and sailing instructions. On the water, a boat can be instructed by a race committee equipment inspector or measurer to proceed immediately to a designated area for inspection.
- 21. EVENT ADVERTISING**
- 21.1 Boats may be required to display advertising supplied by the organising authority.
- 22. OFFICIAL BOATS**
- 22.1 Official boats will be marked by flying the Takapuna Boating Club flag.
- 23. SUPPORT BOATS.**
- 23.1 Except when requested to participate in rescue operations, team leaders, coaches, parents and other support personnel shall stay outside areas where boats are racing and are restricted to a 5 knot speed limit, from the time of the preparatory signal from the first start of a sequence of starts until all boats have finished or the race committee signals a postponement or abandonment of all races. The areas the boats are racing is defined as the area inside the course and within 100 metres of any mark, lay line, starting line, finishing line or any area where any boat that is racing is sailing or may sail.
- 23.2 When the wind is less than 10 knots support boats shall not exceed 5 knots within 500 metres of the area where boats are racing.



- 23.3 Attention is drawn to the relevant local council bylaws regarding wearing of life jackets and other restrictions. A copy of these is on the official noticeboard located in the Takapuna Boating Club.
- 23.4 Boats associated with the regatta and registered support boats shall comply with the New Zealand Government regulation “Submarine Cables and Pipelines Protection Act 1996”. This registration prohibits anchoring in the area shaded in the “No Anchoring Area” in Attachment 2 and defined on charts NZ 532 and NZ 5322.
- 23.5 Any support boat breaking NoR Clause 15.1 will be subject to a hearing which may result in a report to their national authority and ISAF. As a consequence, a competitor associated with the skipper of the support craft may be disqualified from the race closest to the time of the infringement
- 23.6 Attachment 2 shows the Prohibited Anchoring Area shaded in Pink.
- 23.7 When flag W (with a long sound signal) is displayed on a committee boat all support boats are requested to remain afloat and help all sailors.
- 23.8 Support boats shall be marked with the country code and the sail number/s of the boat/s that they are supporting.
- 24. TRASH DISPOSAL**
- 24.1 Trash may be placed aboard support and race committee boats.
- 25. RADIO COMMUNICATION**
- 25.1 Except in an emergency, a boat shall neither make radio transmissions while racing nor receive radio communications not available to all boats. This restriction also applies to mobile phones.
- 26. PRIZEGIVING**
- 26.1 Prizegiving will be held in the Takapuna Boating Club as soon as possible after the completion of the last race.
- 26.2 Perpetual Trophies will be awarded for 1st, 2nd and 3rd places.
- 27. DISCLAIMER OF LIABILITY**
- 27.1 Competitors participate in the regatta entirely at their own risk. See rule 4, Decision to Race. The organising authority will not accept any liability for material damage or personal injury or death sustained in conjunction with or prior to, during, or after the regatta.
- 28. INSURANCE**
- 28.1 Each participating boat shall be insured with a valid third party liability insurance with a minimum cover of NZD 1,000,000 per event or the equivalent.



ATTACHMENT 1

Courses– Windward /Leeward	Triangle Windward/Leeward
-----------------------------------	----------------------------------

LR

Course: Leeward finish

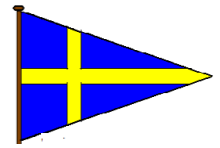
Signal	Mark Rounding Order
LR2	Start – 1 – 1a – 3s/3p – 1 – 1a – 3p – Fin

TRA

Course: Leeward finish

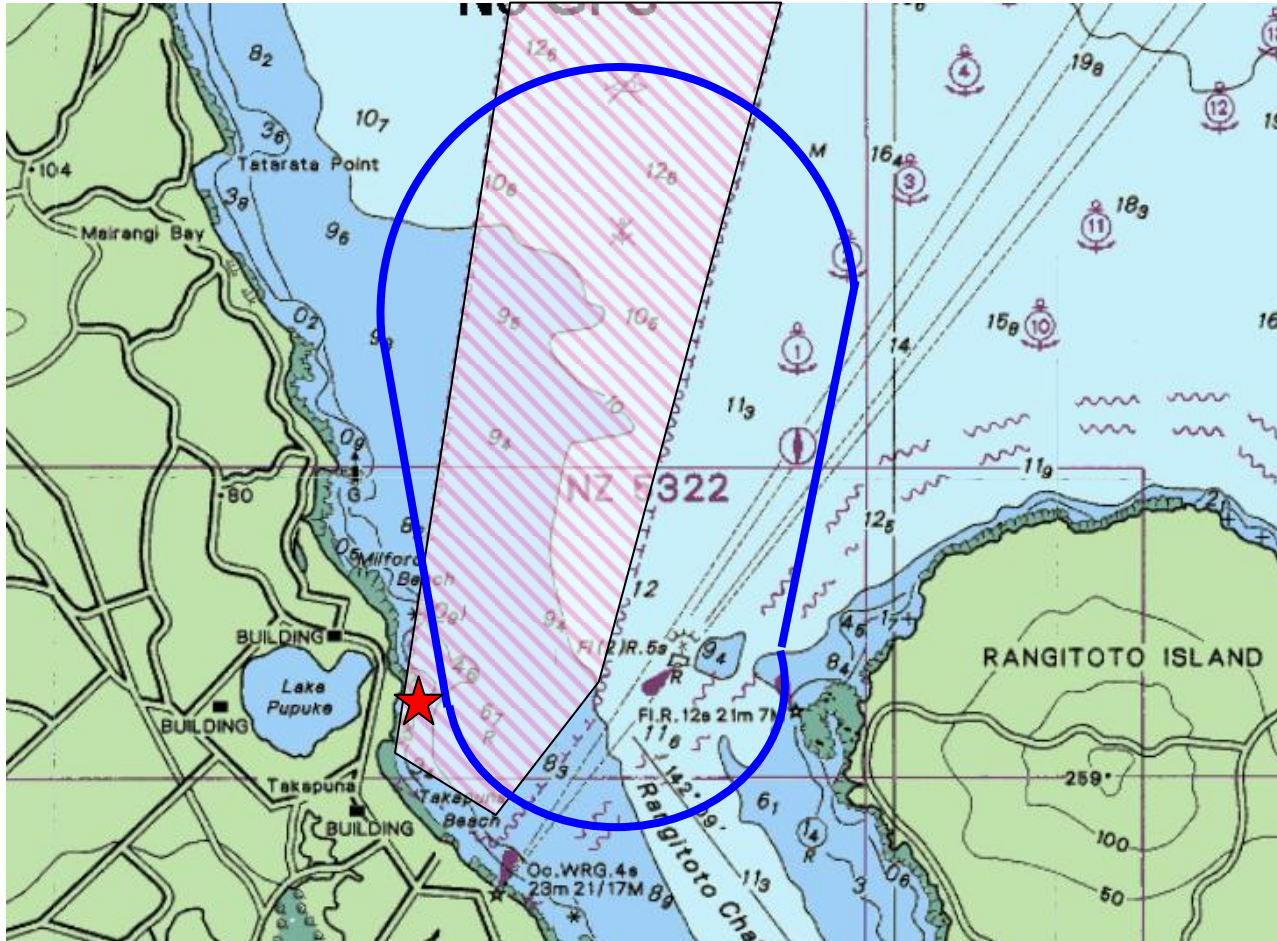
Signal	Mark Rounding Order
TRA2	Start – 1-1a – 2 – 3s – 1-1a – 3s/3p – Fin


Mark	Description	LR2	TRA2
1	Large Round Orange Buoy		Large Round Orange Buoy
1a	Large Round Orange Buoy		Large Round Orange Buoy
2		N/A	Large Round Orange Buoy
3s 3p	Large Round Orange Buoys		Large Round Orange Buoys
SS	Starting mark starboard end	Committee boat "Thea"	Committee boat "Thea"
SP	Starting mark port end	Committee boat "Rib"	Committee boat "Rib"
FS	Finishing mark starboard end	Committee boat "Thea"	Committee Boat "Thea"
FP	Finishing mark port end	Committee boat "Zella"	Committee Boat "Zella"
Change of Course		Black Buoy	Black Buoy





ATTACHMENT 2.

APPROXIMATE LOCATION OF THE RACING AREA



 Takapuna Boating Club location

 Approximate course area

 Prohibited anchoring area